



Renewable Energy (RE) Explorer and RE Data Explorer

Introduction

Andrea Watson

USAID Portfolio Manager

U.S. Department of Energy's National Renewable Energy Laboratory

RE Explorer Web Portal



Data & Decisions Training & Resources Ask an Expert About Launch Tool

Explore Renewable Energy Data

The Renewable Energy (RE) Data Explorer, the flagship tool of the RE Explorer, facilitates renewable energy decision-making, investment, and deployment through a dynamic, online analytical tool.

Click on a map area to go to that RE Data Explorer tool.

RE Explorer provides renewable energy data, analytical tools, and technical assistance to developers, policymakers, and decision makers in developing countries. It enables them to make meaningful decisions that support low-emission development and ultimately reduce greenhouse gas emissions.

Use Renewable Energy Data »

Understand how to use renewable energy data to make effective decisions.

Ask an Expert »

Need assistance with renewable energy data and analysis? We have experts who can help you.

Access Online Training and Resources »

To make the most of your data and analysis, see our online training videos, tutorials, and more.

[Contacts](#) | [Security & Privacy](#) | [Disclaimer](#)

This website is managed and hosted by the National Renewable Energy Laboratory.



re-explorer.org



What need is the RE Explorer serving?

1. RE resource data and supporting GIS data sets are crucial to supporting decisions that achieve objectives
2. Decisions that are not data driven can lead to outcomes that don't reflect an appropriate amount of ambition, don't maximize cost effectiveness, or are infeasible to implement
3. There is a demand for resources and information on this topic

Good Data → Good Decisions



Target



Policy



Power Sector



Investment

RE Explorer Web Portal



Data & Decisions Training & Resources Ask an Expert About Launch Tool

Explore Renewable Energy Data

The Renewable Energy (RE) Data Explorer, the flagship tool of the RE Explorer, facilitates renewable energy decision-making, investment, and deployment through a dynamic, online analytical tool.

Click on a map area to go to that RE Data Explorer tool.

RE Explorer provides renewable energy data, analytical tools, and technical assistance to developers, policymakers, and decision makers in developing countries. It enables them to make meaningful decisions that support low-emission development and ultimately reduce greenhouse gas emissions.

Use Renewable Energy Data »

Understand how to use renewable energy data to make effective decisions.

Ask an Expert »

Need assistance with renewable energy data and analysis? We have experts who can help you.

Access Online Training and Resources »

To make the most of your data and analysis, see our online training videos, tutorials, and more.

[Contacts](#) | [Security & Privacy](#) | [Disclaimer](#)

This website is managed and hosted by the National Renewable Energy Laboratory.



re-explorer.org





The RE Data Explorer is available for Mexico, Ghana, Kenya, Kazakhstan, Afghanistan, Pakistan, India, Nepal, Bangladesh, the Lower Mekong region, Indonesia, and the Philippines

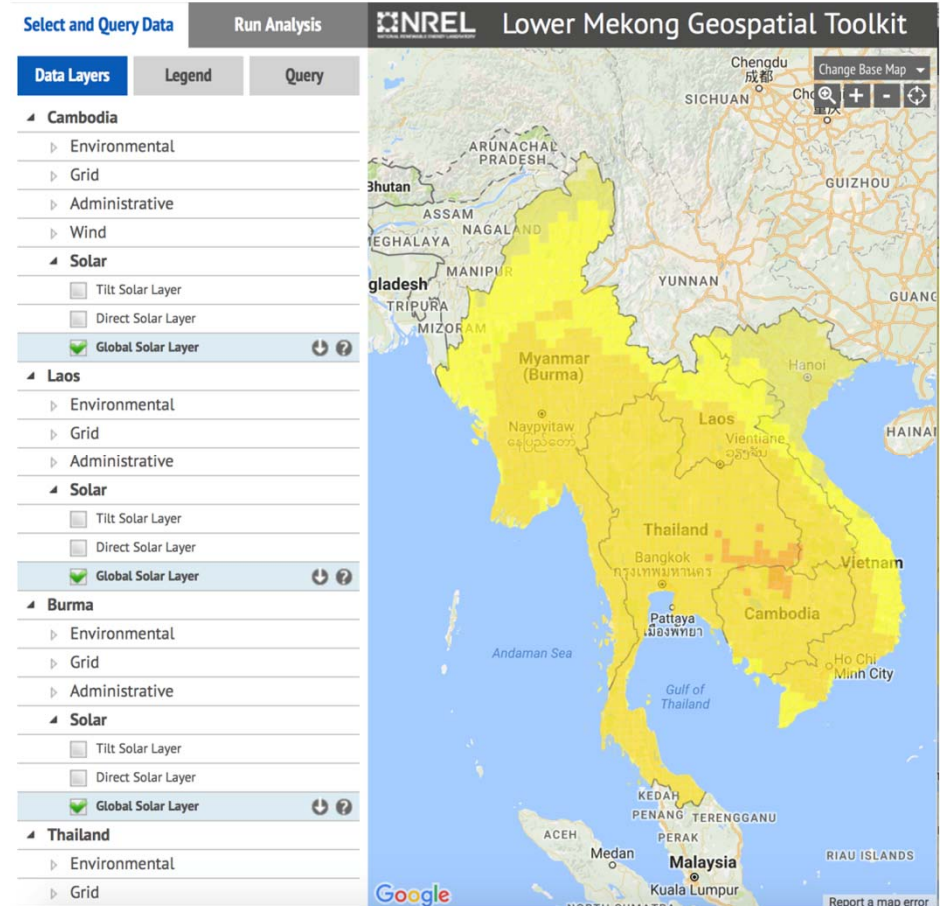


www.re-explorer.org

What is the RE Data Explorer?

RE-Explorer.org

- Extensible toolkit for RE decision-making
- Wraps complex spatial analysis techniques in an easy-to-use interface targeted at non-specialists
- Highly customizable, visually compelling interface
- Platform for distributing data and metadata.



Thank You
andrea.watson@nrel.gov

RE-Explorer.org



www.re-explorer.org



RE Data Explorer: Private Sector Applications

Mark Jacobson

mark.jacobson@nrel.gov

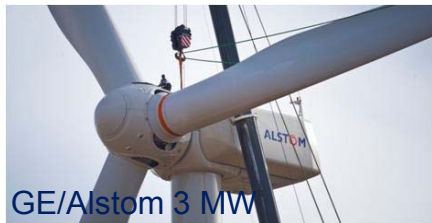
Sr. Project Lead – Deployment

U.S. Department of Energy's National Renewable Energy Laboratory

Outline

- Introduction
- Goals (private sector)
- Overview of energy development process
- Application of RE Data Explorer
- Questions

NREL: National Wind Technology Center



Wind Research

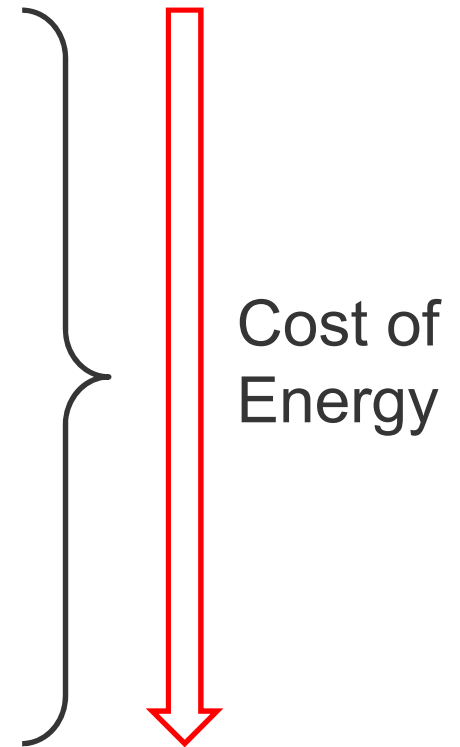
- Turbine testing
- Blade testing
- Drivetrain testing



National Wind Technology Center Vision

Goals:

- Improve RE production
- Reduce RE equipment and installation costs
- Improve reliability and lower operating cost
- **Improve siting and eliminate barriers to large RE development**



RE Explorer Web Portal



Data & Decisions Training & Resources Ask an Expert About Launch Tool

Explore Renewable Energy Data

The Renewable Energy (RE) Data Explorer, the flagship tool of the RE Explorer, facilitates renewable energy decision-making, investment, and deployment through a dynamic, online analytical tool.

Click on a map area to go to that RE Data Explorer tool.

RE Explorer provides renewable energy data, analytical tools, and technical assistance to developers, policymakers, and decision makers in developing countries. It enables them to make meaningful decisions that support low-emission development and ultimately reduce greenhouse gas emissions.

Use Renewable Energy Data »

Understand how to use renewable energy data to make effective decisions.

Ask an Expert »

Need assistance with renewable energy data and analysis? We have experts who can help you.

Access Online Training and Resources »

To make the most of your data and analysis, see our online training videos, tutorials, and more.

[Contacts](#) | [Security & Privacy](#) | [Disclaimer](#)

This website is managed and hosted by the National Renewable Energy Laboratory.



re-explorer.org



Learning Objectives

How the RE Data Explorer supports wind development for investors and developers:

- Visualization capability
- Access to data
- Reduced project prospecting time
- Easy to use (manage/evaluate multiple layers of information to support decisions)

Overview of Wind Development



Overview of Wind Development

3 legs of the stool:

1. Market
2. Wind Resource
3. Land

Overview of Wind Development: Market

Market

Customers

- Load forecasts = future energy needs
- Wholesale energy prices = price competitiveness of RE
- Policy Drivers (Example: RPS = an appetite to buy wind)

Interconnection and transmission availability

- Location of transmission lines
- Transmission line profile:
- Size (kilovolts)
- Ownership
- Study processes
- Interconnection
- Transmission



Slide 17

KH10

animate the two highest-level bullets?

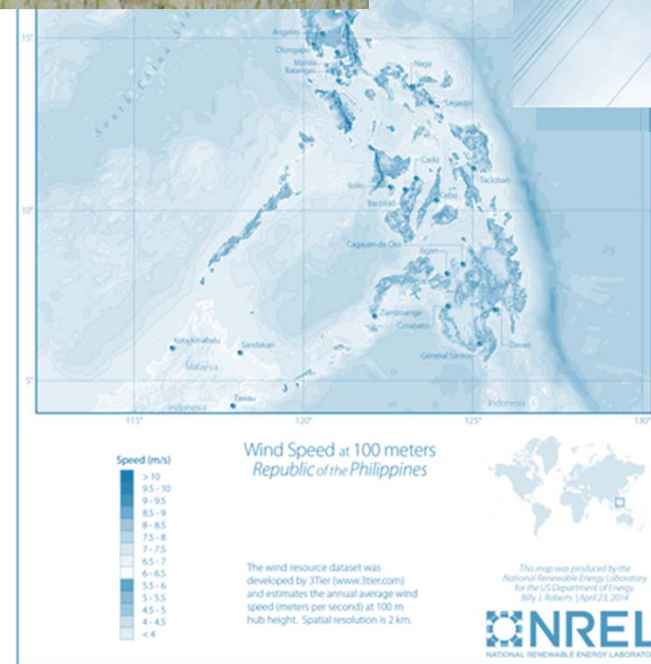
Karin Haas, 7/26/2017

Overview of Wind Development: Resource

Wind Resource

Objective: Net Capacity Factor estimate for pricing

- Find publicly available data, or
- Purchase a regional wind map, or
- Develop/purchase a model of the Wind Resource, or
- MET towers installs to validate the resource



Overview of Wind Development: Land

Land

Define land uses

- Ownership (private, state or federal lands, large or small parcels)
- Proximity to urban areas -- schools, places of worship, businesses
- Location of parks, refuges, and wildlife/protected areas

Select site

- Land leasing
- Install MET towers

Obtain permits (federal, state, local)

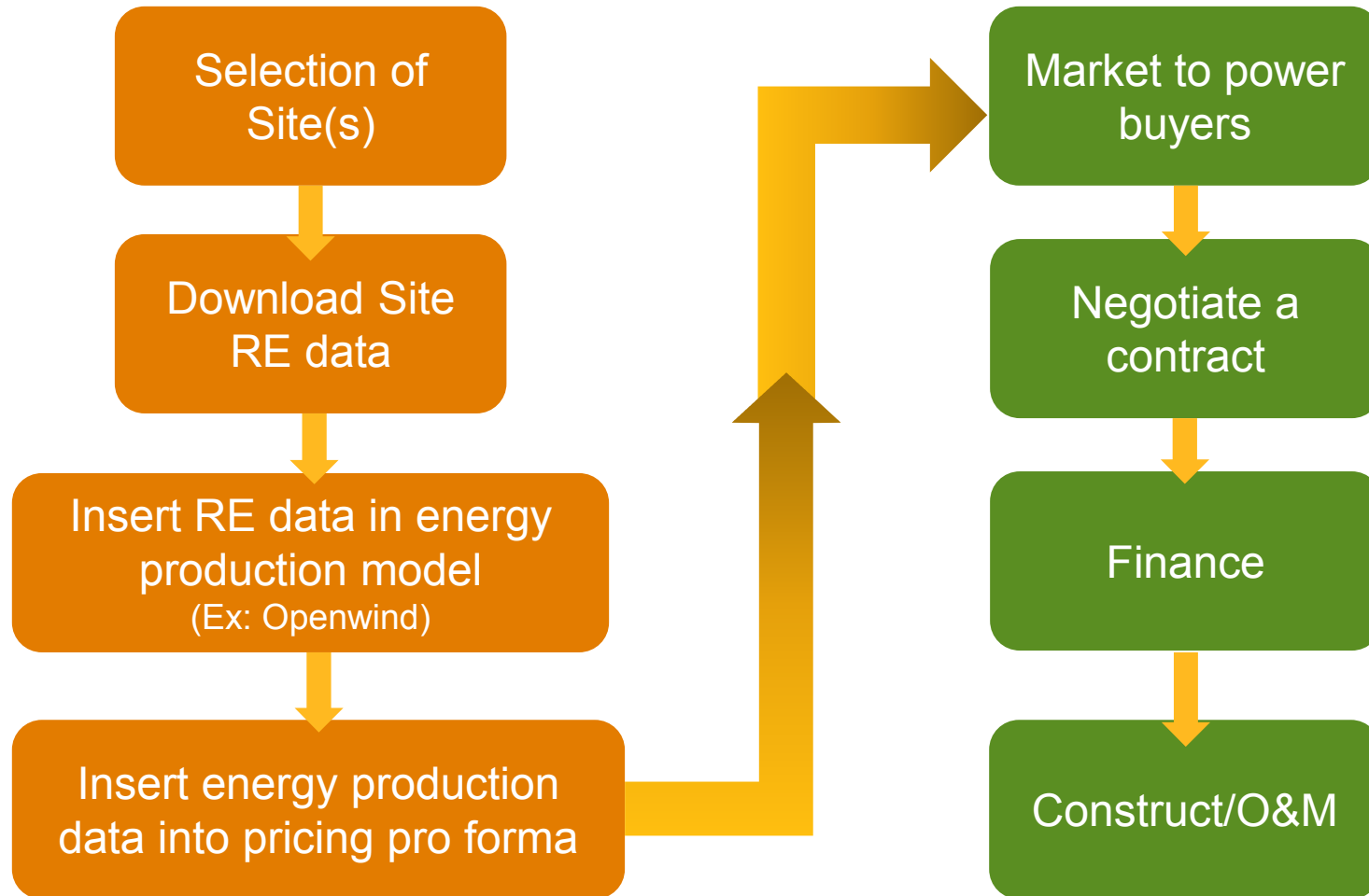
- Sound study
- Flicker study
- Wildlife impact studies (birds and threatened/endangered species)
- Historical preservation departments
- Job and tax benefits to community
- Environmental benefits to community (e.g., water conservation, reduced emissions)
- Project presentations



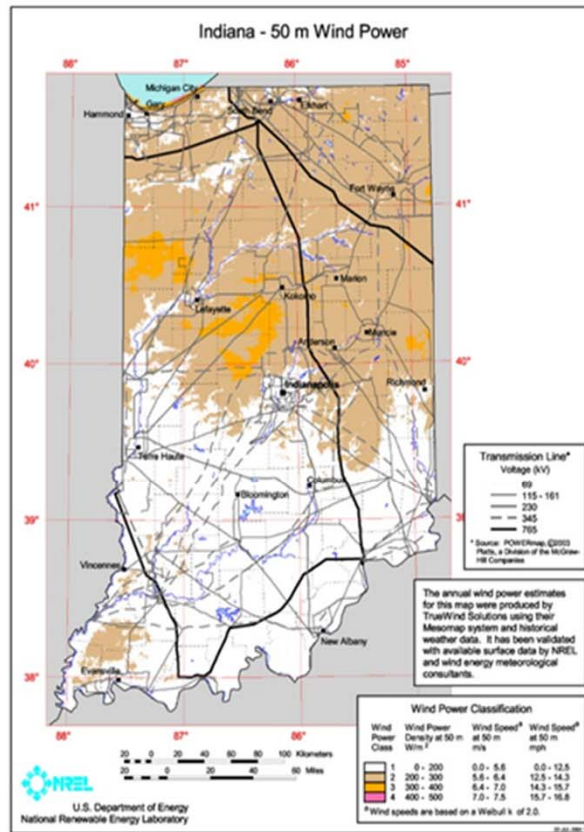
RE Data Explorer Supports All Three Legs of the Wind Development Stool

- ✓ Market – RE Data Explorer identifies transmission lines
- ✓ Wind Resource – RE Data Explorer identifies the wind resource (with capability of downloading raw data)
- ✓ Land – RE Data Explorer provided information on land use, protected/environmental areas

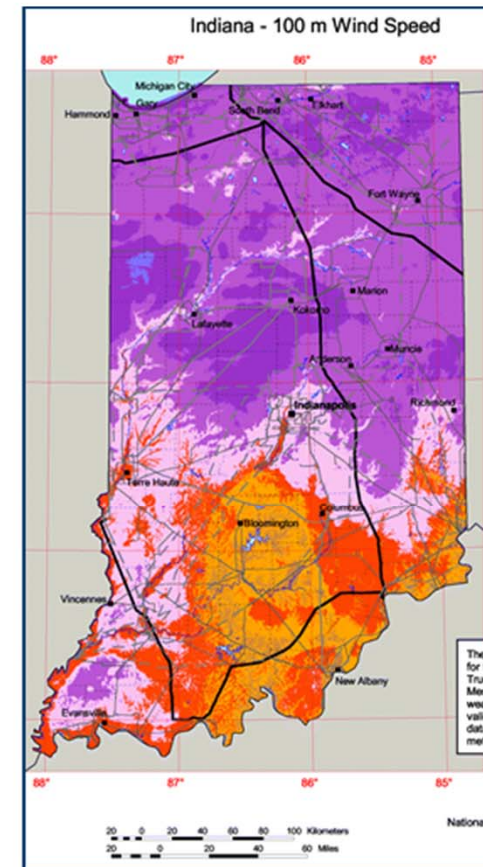
Next Steps in Development



Data Tools versus Static Maps



Best areas 6.4-7.0 m/s
Capacity factors 25-30%



Best areas 7.5-8.2 m/s
Capacity factors 40-45%

RE Explorer Web Portal



Data & Decisions Training & Resources Ask an Expert About Launch Tool

Explore Renewable Energy Data

The Renewable Energy (RE) Data Explorer, the flagship tool of the RE Explorer, facilitates renewable energy decision-making, investment, and deployment through a dynamic, online analytical tool.

Click on a map area to go to that RE Data Explorer tool.

RE Explorer provides renewable energy data, analytical tools, and technical assistance to developers, policymakers, and decision makers in developing countries. It enables them to make meaningful decisions that support low-emission development and ultimately reduce greenhouse gas emissions.

Use Renewable Energy Data »

Understand how to use renewable energy data to make effective decisions.

Ask an Expert »

Need assistance with renewable energy data and analysis? We have experts who can help you.

Access Online Training and Resources »

To make the most of your data and analysis, see our online training videos, tutorials, and more.

[Contacts](#) | [Security & Privacy](#) | [Disclaimer](#)

This website is managed and hosted by the National Renewable Energy Laboratory.



re-explorer.org



RE Data Explorer Demonstration

Demonstration

RE Data Explorer: Developer and Policymaker

Often the private sector works cooperatively with government agencies to develop a region/country's RE resources.

Questions that are answered together:

- What is the quantity of the RE resource potential?
- What is the economic development potential (i.e., jobs, tax revenue)?
- What incentives might be developed to stimulate investment?
- Where is the location of the resource?
 - Siting requirements
 - Balance environmental issues with clean energy goals
 - Establish Renewable Energy Zones
 - Coordinate with utilities on transmission development

What We've Learned

Wind developers and investors can use the RE Data Explorer to support wind development. The RE Data Explorer provides:

- Improved access to data
- Increased capability regarding graphical representation
- Easy to use (managing and evaluating multiple layers of data graphically on one screen to support decision-making)
- Improved efficiency for project prospecting
 - Saving time and money

re-explorer.org

Results

Investment in home grown renewable power



Results

Generating low-cost energy



Questions



Mark Jacobson, 303-384-6902
mark.jacobson@nrel.gov